



Company : Apache Energy Ltd

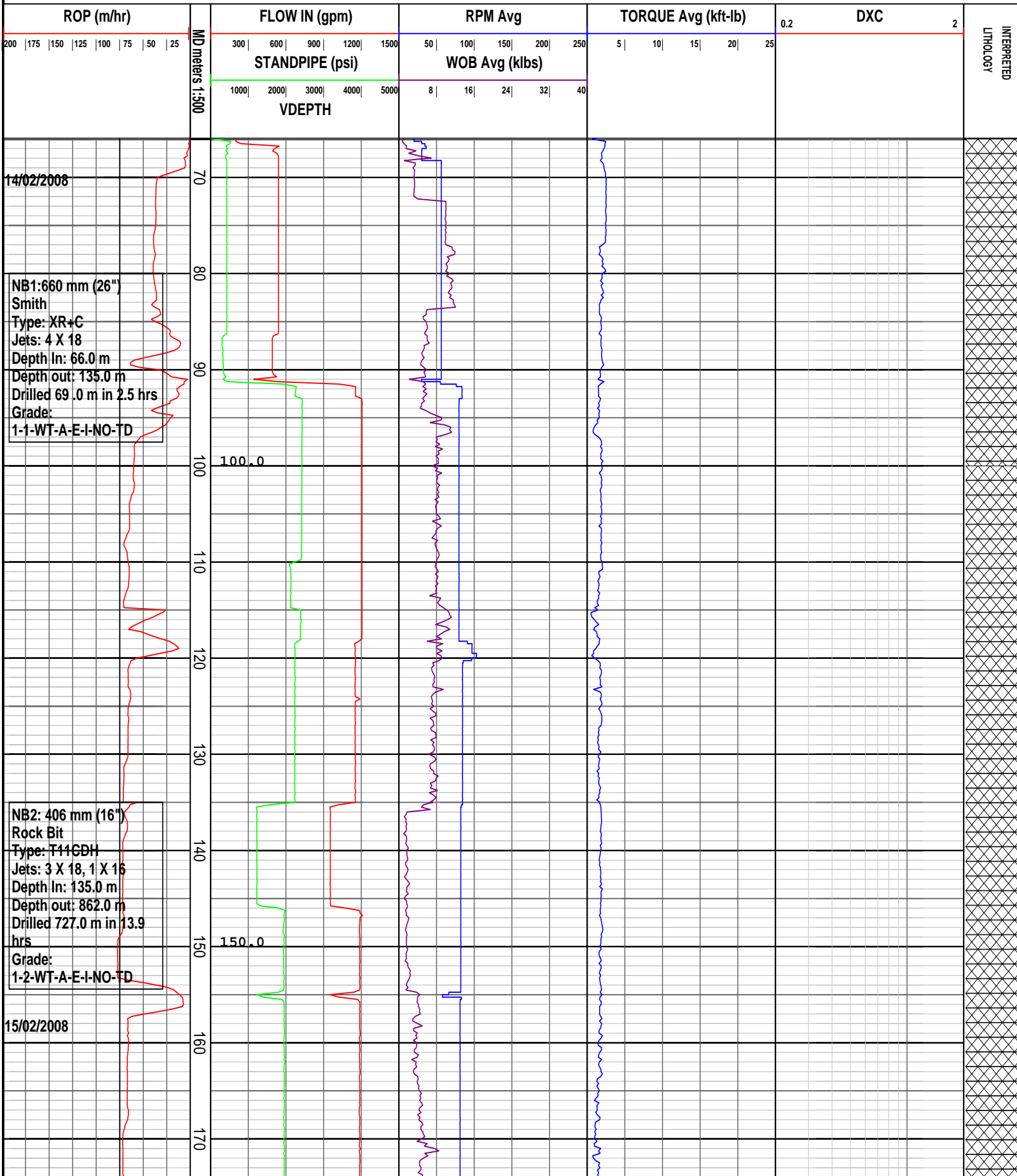
Well : Wasabi-1

Interval : 66.00 - 1710.39 meters

Created : 25/Feb/2008 8:41:58 AM

INTEQ

DRILLING DATA PLOT



INTERPRETED LITHOLOGY

WOB: 1 - 10 klb
RPM: 60 - 105
GPM: 950 - 1230
SPP: 1215 - 2425 psi

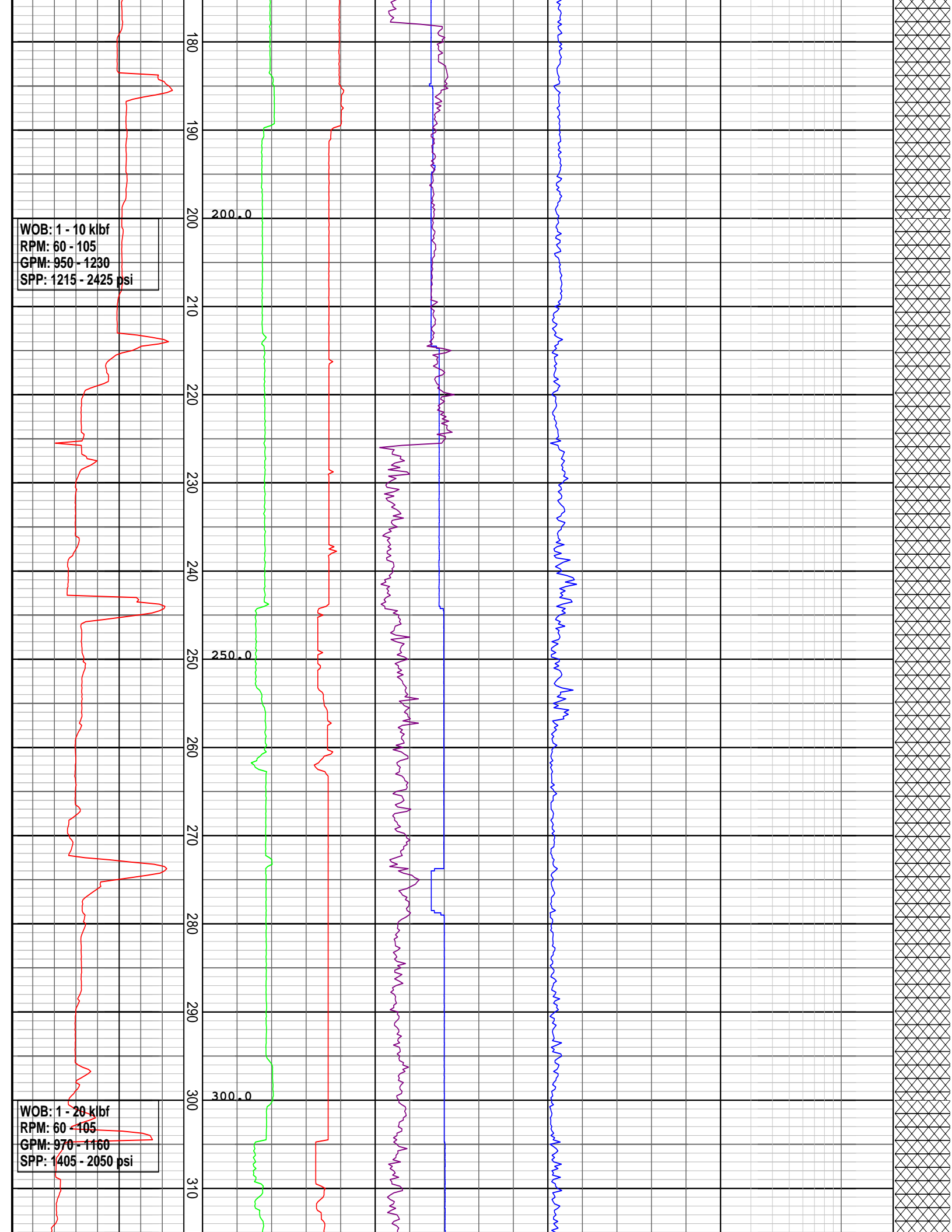
WOB: 1 - 20 klb
RPM: 60 - 105
GPM: 970 - 1160
SPP: 1405 - 2050 psi

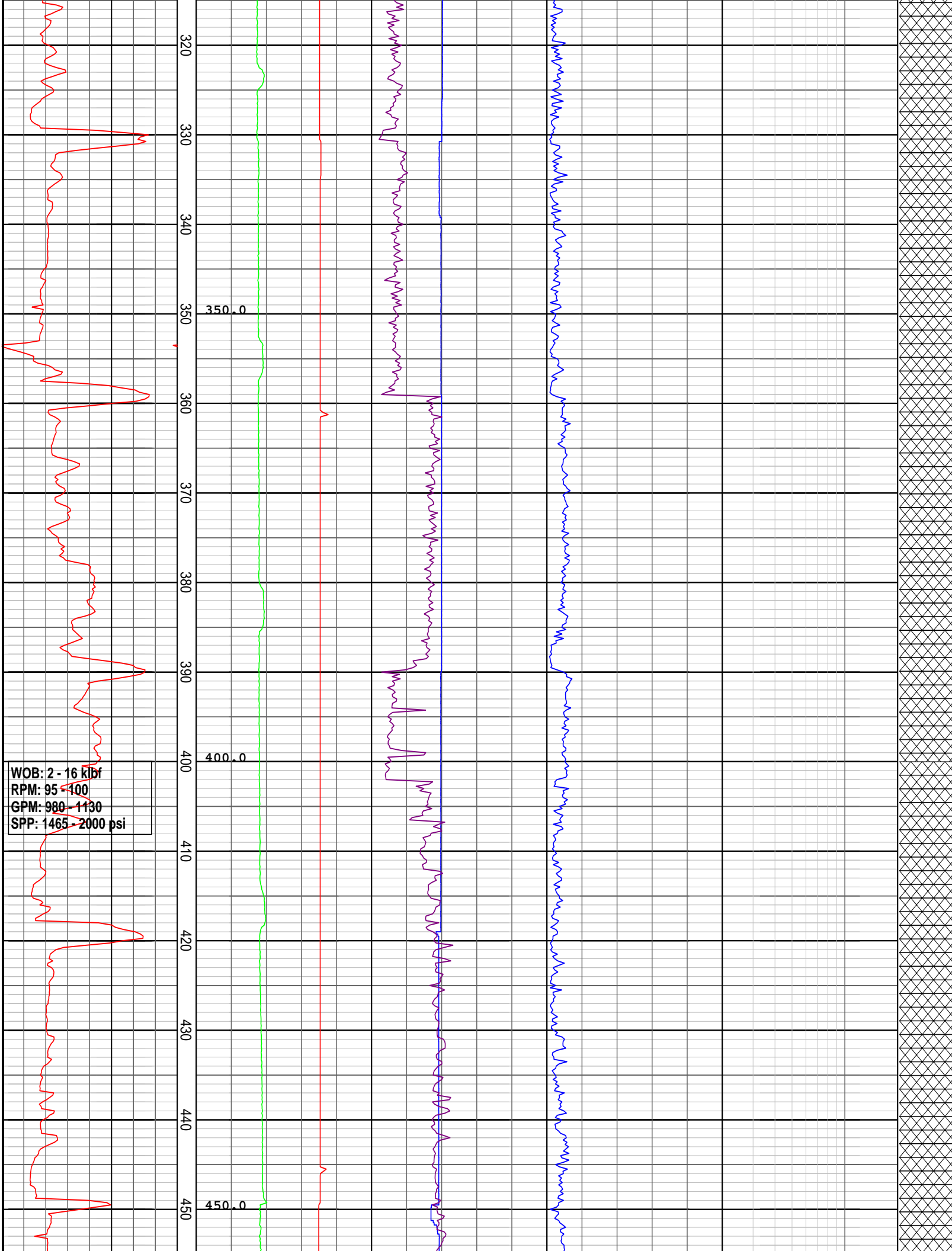
180
190
200
210
220
230
240
250
260
270
280
290
300
310

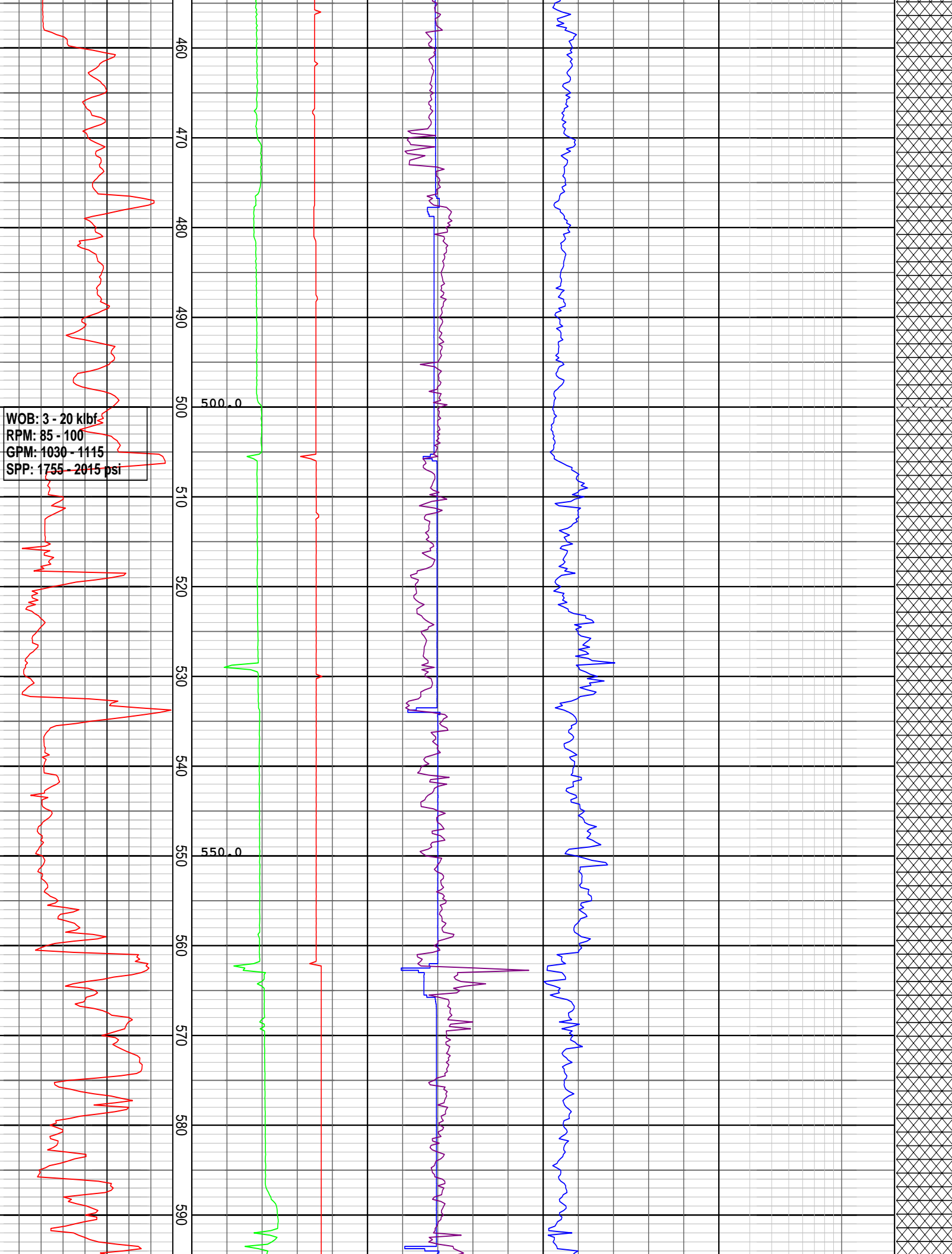
200.0

250.0

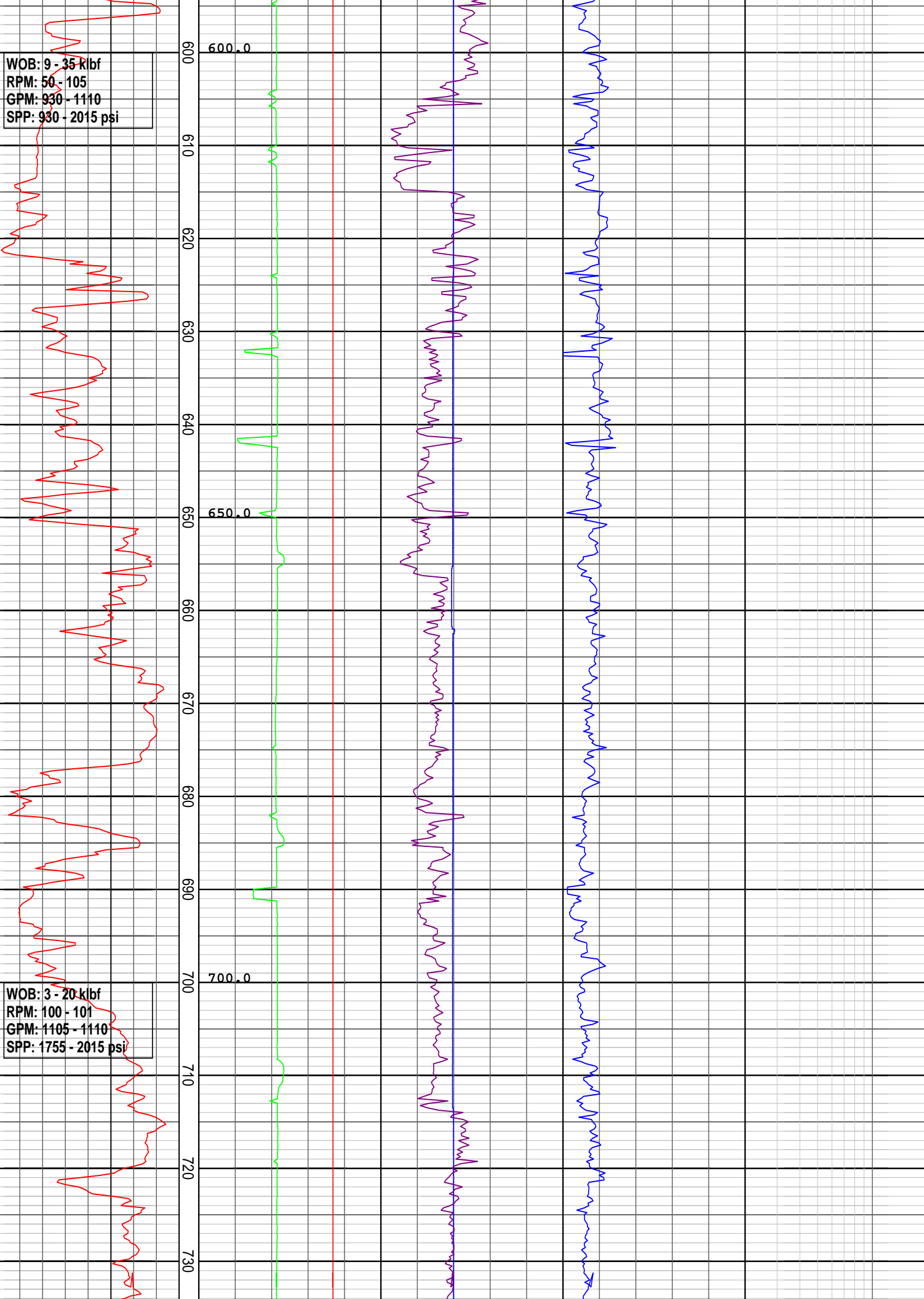
300.0



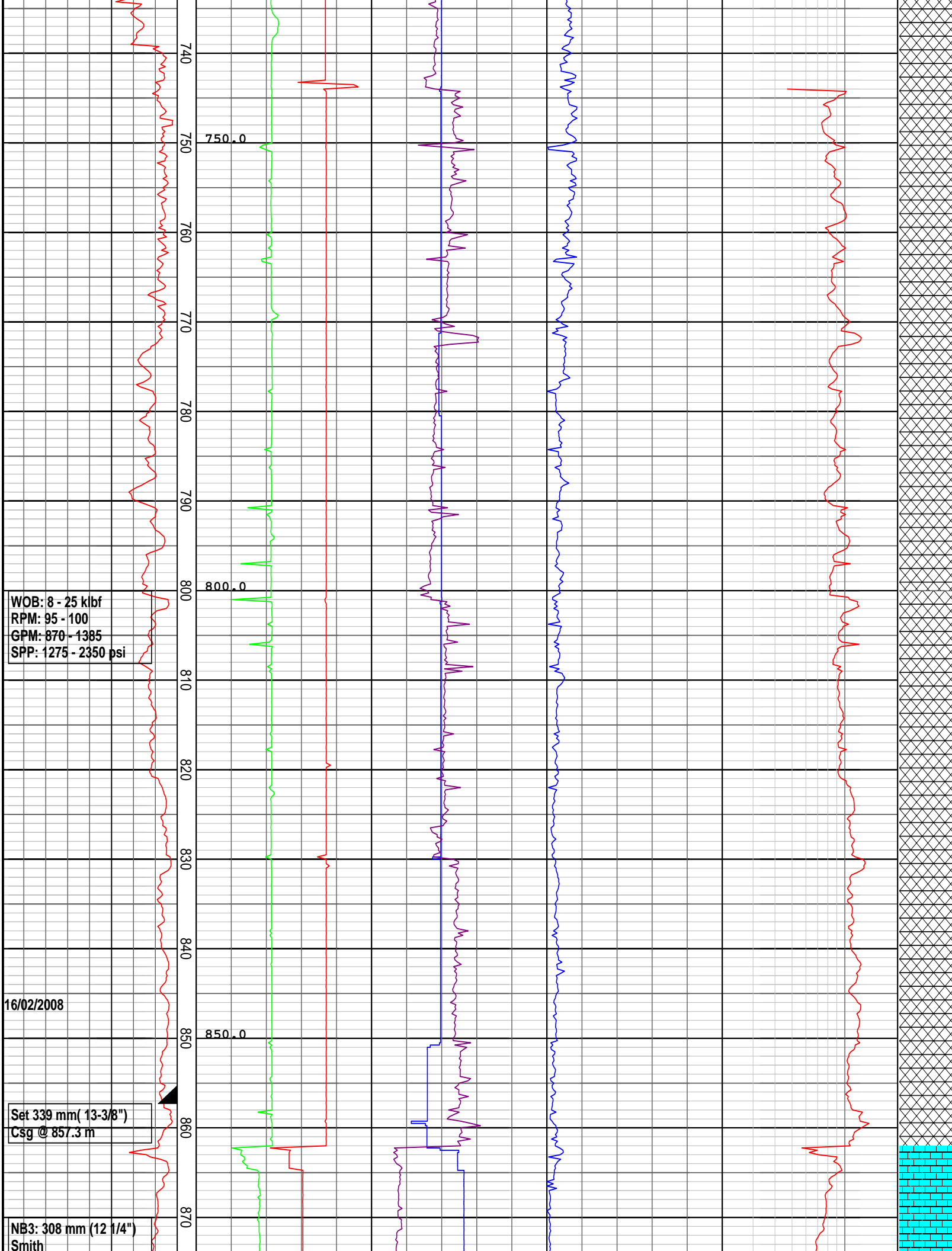




WOB: 9 - 35 kJbf
RPM: 50 - 105
GPM: 930 - 1110
SPP: 930 - 2015 psi



WOB: 3 - 20 kJbf
RPM: 100 - 101
GPM: 1105 - 1110
SPP: 1755 - 2015 psi



WOB: 8 - 25 klbf
RPM: 95 - 100
GPM: 870 - 1385
SPP: 1275 - 2350 psi

16/02/2008

Set 339 mm (13-3/8")
Csg @ 857.3 m

NB3: 308 mm (12 1/4")
Smith

750.0

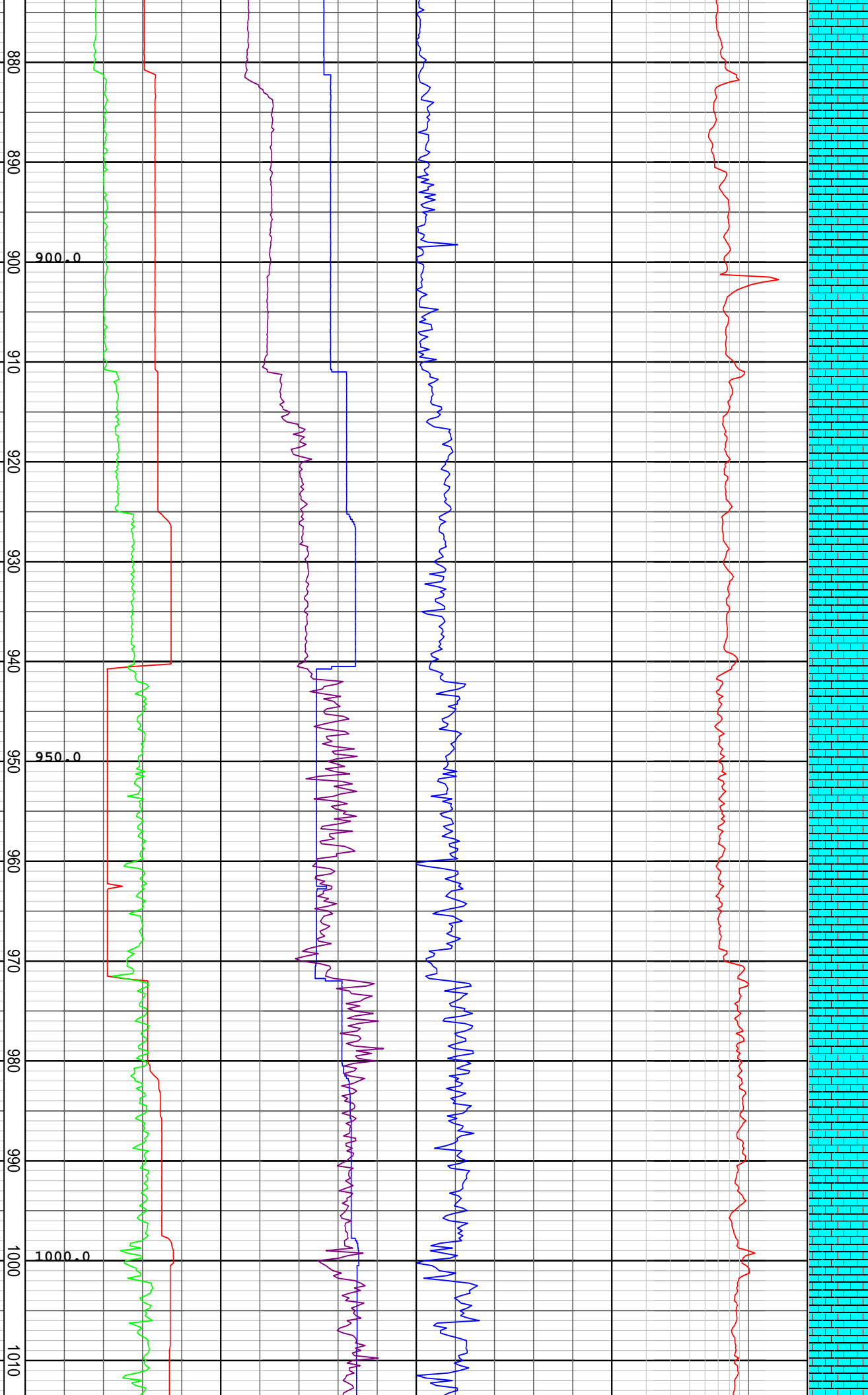
800.0

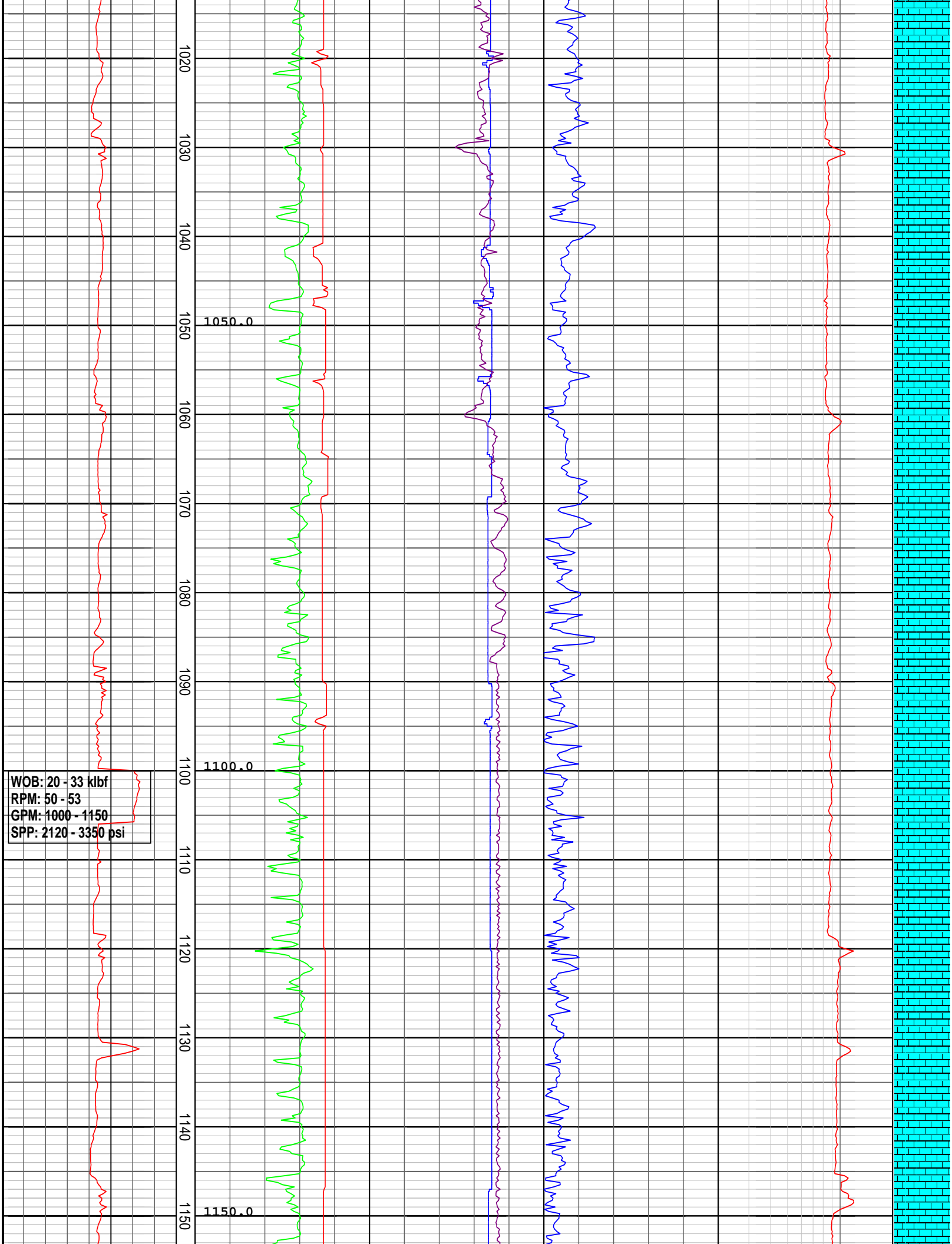
850.0

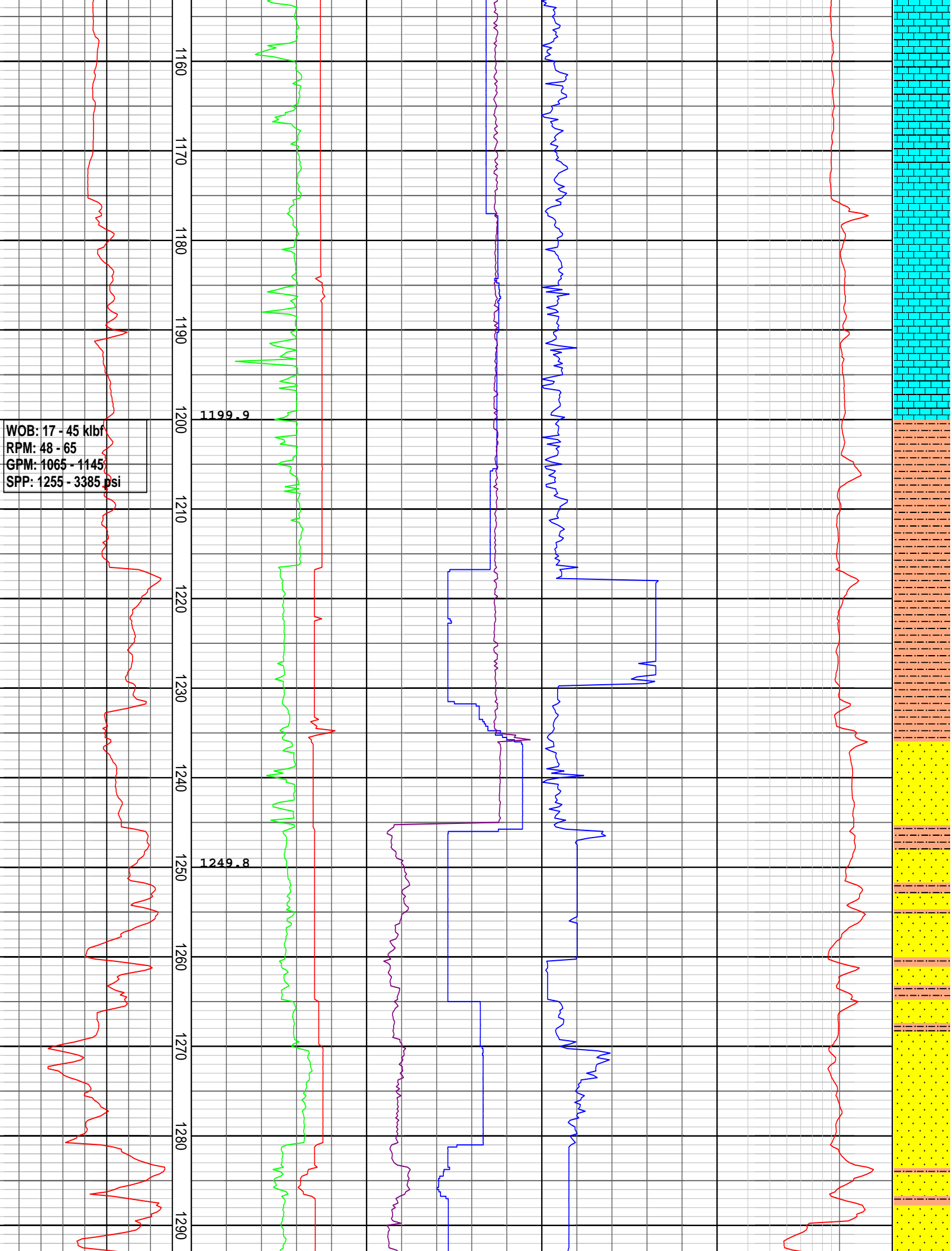
Serial: SCC985
Type: PDC Fixed Cutter
Jets: 6 X18,
Depth In: 862.0 m
Depth out: xxx.0 m
Drilled xxx.0 m in xxx
hrs
Grade:
1-2-WT-A-E-I-NO-TD

WOB: 5 - 25 klf
RPM: 28 - 100
GPM: 633 - 1150
SPP: 1020 - 2226 psi

WOB: 8 - 33 klf
RPM: 33 - 55
GPM: 630 - 1135
SPP: 2000 - 3170 psi







WOB: 4 - 38 kJbf
RPM: 36 - 65
GPM: 915 - 1645
SPP: 2145 - 3450 psi

1300
1310
1320
1330
1340
1350
1360
1370
1380
1390
1400
1410
1420
1430

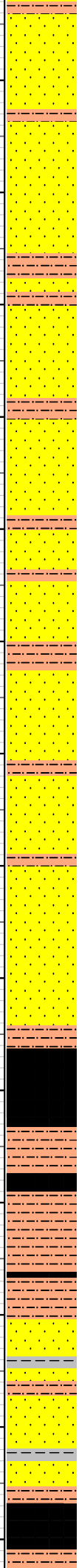
1299.5

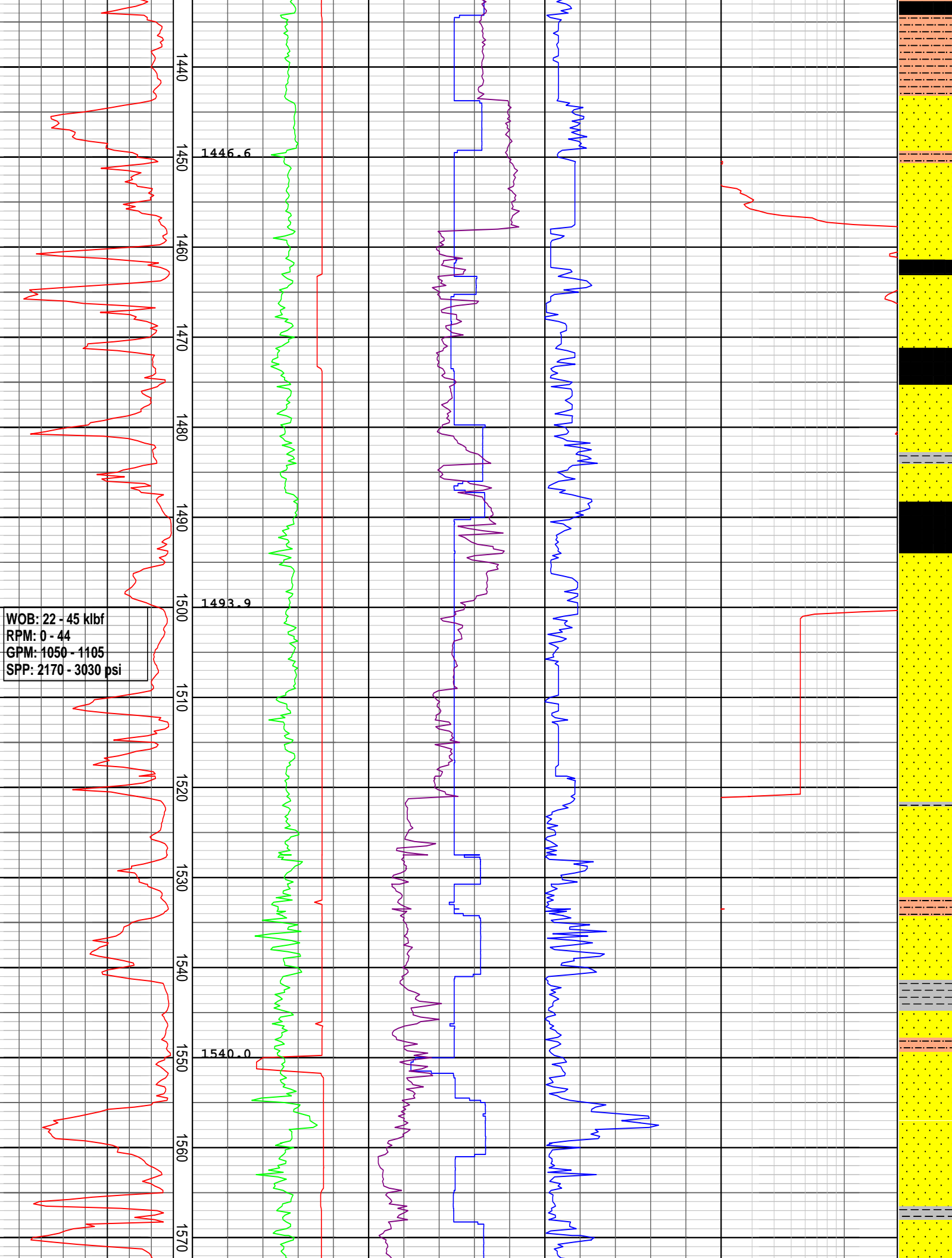
1349.0

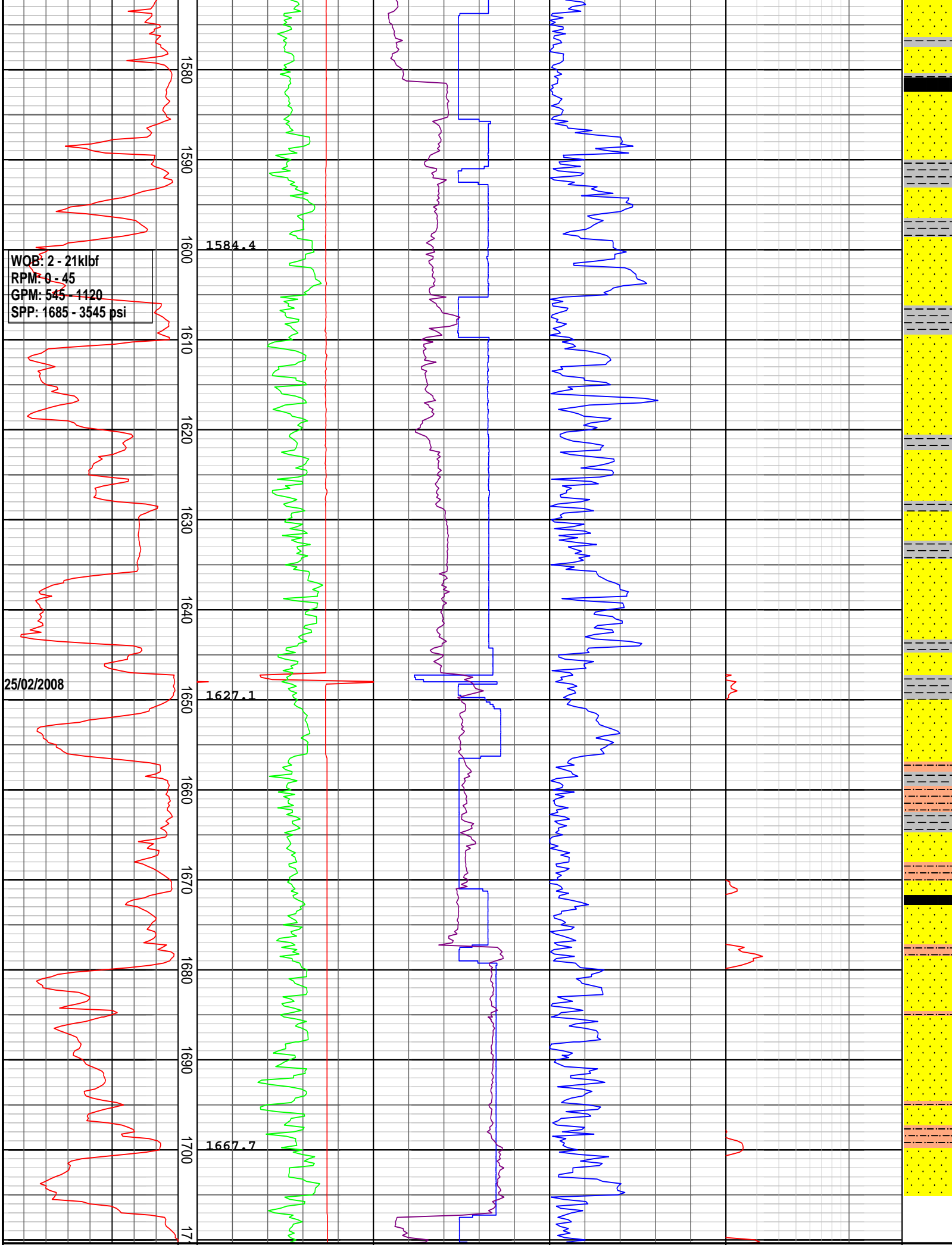
1398.2

24/02/2008

WOB: 2 - 35kJbf
RPM: 22 - 45
GPM: 955 - 1115
SPP: 1825 - 3260 psi







DRILLING DATA PLOT

ROP (m/hr)	MD meters 1:500	FLOW IN (gpm)	RPM Avg	TORQUE Avg (kft-lb)	DXC	INTERPRETED LITHOLOGY
200 175 150 125 100 75 50 25		300 600 900 1200 1500	50 100 150 200 250	5 10 15 20 25	0.2	
		STANDPIPE (psi)	WOB Avg (klbs)			
		1000 2000 3000 4000 5000	8 16 24 32 40			
		VDEPTH				